

A gas hearth can appear to be a plain equipment, a bit flame behind a decorative display screen, managed with the aid of a dial and a thermostat. Underneath that, that is a combustion software with strict specifications for the way the burnt gases leave the room. If the venting is incorrect, the symptoms should not necessarily dramatic at the beginning. Sometimes the fireplace simply doesn't burn cleanly. Sometimes it produces a stronger odor when it lighting fixtures. And in the worst cases, it should enable combustion products to spill into the room.

I've been round gas paintings lengthy enough to realize that employees sometimes attention at the "have compatibility" and omit the "vent". The encompass looks stage, the gasoline pipe sits neatly, the manipulate knob turns easily, after which everybody walks away feeling glad. Venting is the place the safeguard margin lives, and getting it proper is a blend of greatest aspects, most suitable format, and careful trying out on website.

## **What "venting" in point of fact way for a gasoline fire**

When laborers say "venting", they typically suggest the obvious flue pipe or the chimney. For gasoline fires, it can be the whole device that guarantees combustion gases are over excited properly. That manner can comprise elements you on no account see as soon as the hearth is in vicinity: the right kind flue diameter, the correct joints, seals and gaskets, the integrity of the flue direction, and the termination arrangement.

It additionally includes the room behaviour. A fuel fireplace does no longer operate in isolation. The room has to deliver air in the approach the equipment expects, and the flue has to determine the right draw. If the room is unusually hermetic, if extraction is pulling air out, if draughts are being created by using enthusiasts or extractor hoods, or if the flue path is limited, combustion can burst off spec.

That concerns even if you might be fitting a regularly occurring domestic unit, upgrading from an older model, changing to LPG, or commissioning after a boiler deploy and bog refurbishment. I've noticed venting complications crop up after things like new home windows, larger insulation, or an air conditioning unit being introduced and the ducting converted how the room rigidity behaves.

## **The "type" query: open flue vs room sealed**

The first functional step in any fuel fireplace setting up is picking out the equipment variety and the flue type it uses. The organization guidelines will spell out what is permissible, however the significant photograph is straightforward.

Open flue appliances have faith in the room for combustion air and have faith in the flue to drag merchandise up and out. If the room has poor air delivery, if the flue path is compromised, or if powerful down-draught situations happen, the chance rises.



Room sealed appliances take combustion air from open air and discharge merchandise via a committed flue process. They still ought to be as it should be put in, however the room rigidity has much less impression on the effortless combustion air grant. Even then, negative siting of the termination or flawed routing can create disorders.

One rationale venting gets misunderstood is that a fuel hearth should be would be could very well be "installed" and nevertheless not be "commissioned". Fitment would possibly appearance proper, but the components won't draw well, or the flue won't be achieving a solid rigidity change. That's why a actual Gas Safety Check just isn't simply model filling. It is the instant you verify that the appliance and the venting approach are behaving as supposed.

## **Components topic more than workers expect**

Most venting disasters don't seem to be resulting from a dramatic mistake like forgetting a flue component. They are due to small mismatches and questionable substitutions: the inaccurate period of flue area, an improper adaptor, a flue designed for one edition compelled onto every other, poor sealing, or joints assembled with out the desirable procedure.

Even when the perfect flue kit is used, there are real looking details that will flow once you do now not gradual down. Flue pipes may want to be aligned accurately so that they do now not force a bend into the joint. Gaps at collars will be "closed up" through the encompass as opposed to virtually being corrected. When persons are eager to get the process completed, they every so often rush the flue supports and find yourself with a course that subtly sags. That sag can minimize the effectiveness of the flue, create condensation wallet, and in the end result in blockage or bad ignition.



In the field, I've additionally viewed considerations where a past installer assumed "it should perhaps in good shape". It did healthy, yet it did now not suit the venting specifications. A later Gas Fire Installation needed to cast off and substitute sections because the entire gadget was running towards itself.

## Room prerequisites could make a precise flue behave incorrectly

A flue process might be constructed successfully and still underperform because of the room. That is why I take note of the house as a good deal as the fireplace.

If the room has an extractor fan, a tumble dryer going for walks within reach, or an aggressive cooker hood, it's going to depressurise the room simply as the fire attempts to ignite and set up sturdy combustion. If a lavatory air extraction procedure runs when the hearth is off, you might not detect some thing. Then one night, anyone turns on the fan and the hearth starts off to act differently. That "many times" obstacle is long-established in venting lawsuits.

A same issue seems after house innovations. New insulation reduces out of control air leakage. New windows can alternate airflow patterns. Even exchanging how doorways close, changing skirting, or blockading a old air direction can shift room strain dynamics.

I count attending a Boiler Breakdown name where the true criticism become intermittent flame balance from a gasoline hearth within the living room. The boiler itself turned into fine. The engineer observed that the loved ones had currently had an air conditioning unit mounted with a ducting direction that modified rigidity in adjacent spaces. The flue direction had been "technically fabulous" within the past, but now the room turned into respiratory otherwise. The restoration used to be not ornamental, it used to be practical: adjusting the venting association and confirming combustion with the right kind checks on the time of commissioning.

## Siting and termination: the element you will not fudge

Termination is wherein venting meets the open air international. A flue that features to the inaccurate position, is just too nearly a gap, or vents right into a sheltered recess can perform poorly. Wind resultseasily may also was a point. Some terminals are designed to face up to specific wind styles, yet no terminal can restore an installing that ignores siting suggestions.

Common termination complications I've seen embrace:

- The outlet being too near to a window, door or vent, rising the danger of products being drawn returned into the development.
- The flue being set up so it discharges into a hollow space or soffit the place it might acquire moisture or be pushed to come back via down draught.
- A termination no longer leaving adequate clearance from structural aspects, causing recirculation.
- The mistaken terminal for the equipment fashion, incredibly if someone adapts a preceding setup.

You could make the interior pipework glance neat and nevertheless end up with a termination that behaves badly in genuine wind prerequisites. That is one of the crucial reasons I insist on checking the backyard place early, beforehand the hearth encompass is measured and ordered. If the termination is compromised, it truly is far more difficult to fix later while the ornamental work is already underway.

## LPG conversions and venting sensitivity

Switching from traditional gas to LPG can trade combustion behaviour. LPG almost always has specific calorific values and flame qualities. That means the burner settings and appliance specifications matter, and venting functionality should be tested after the conversion.

If anyone converts an equipment devoid of well suited exams, it will possibly look to "paintings" for ages. Then you would possibly observe sooting, smell, or inconsistent ignition. With venting, the disadvantages embrace each incomplete combustion and improper evacuation of merchandise. A Gas Safety Check after the conversion is not a "fine to have", it's miles how you make certain the whole lot is secure and top adjusted.

The key is that LPG just isn't just a gas swap. The appliance have got to be serviced for an appropriate fuel and then validated. That is where solid Boiler Service behavior translate well: you cost, degree, regulate, then ensure. The dimension step is what separates a optimistic installation from a bet.

## A sensible on-website workflow that reduces mistakes

Most venting blunders are preventable once you sluggish down on the beginning, test the course, and then try out the appliance accurate as soon as put in.

If I'm commissioning a Gas Fire Installation, I run a dependent attitude in my head and I translate it into how I work. The aim is to cut back the probability of "hidden" problems, like a flue joint a bit mis-seated or an outside terminal put with out the right clearance.

Here is the short pre-installation psychological listing I use sooner than I decide to fixing the surround and final pipework. It is simply not an alternative to producer instructions, however it continues me trustworthy:

- Confirm the equipment flue kit and accessories healthy the form and the gas classification, inclusive of any LPG specifications.
- Check the flue route for obstructions, best diameter, accurate toughen and alignment, and that joints collect with no forcing.
- Verify termination location in opposition t the install requisites, such as openings, wind publicity and any recesses.
- Plan round room aspects like extraction enthusiasts, open stairwells, and stress alterations from other appliances which include air con or cooker hoods.

That workflow enables preclude the maximum widespread "seems all right" traps, above all in houses in which the surrounding works are already relocating swift.

## **Commissioning and trying out: where the actuality displays up**

A gas fire it really is put in however now not appropriate tested can look greatest and still be damaging. Venting checks should make sure that combustion is going down safely and that the appliance is evacuating merchandise as meant.

In exercise, commissioning basically contains confirming the setup and then going for walks checks correct to combustion and safe operation. Depending at the appliance and main issue, which can contain verifying that ignition is solid, flame sample is proper, and that there's no proof of spillage or abnormal operation. If the hearth has sensors, they should behave as anticipated.

I additionally deal with the "person feel" as a security indicator. If ignition is not on time, if the flame seems to be susceptible compared with expectations, if the fireplace smells incorrect whilst it heats up, or if the room feels warmer than frequent close to ignition, these are clues. They can level to venting themes, fuel grant worries, or air aggregate concerns, and the safest course is to stop and diagnose rather than avoid biking the appliance.

A thoroughly completed Gas safe practices certificate data the critical work and supplies an professional path. It also is what purchasers depend on once they promote a belongings, so it truly is worth doing it thoroughly.

## **When problems tutor up later: indicators that aspect to venting issues**

Sometimes venting complications floor weeks or months after set up. The initial exams had been handed, then the home converted. A neighbour's extension may possibly alter wind go with the flow. Someone may well add a brand new extractor hood. Windows get replaced. An Air Conditioning technique possibly tuned otherwise. Small changes may have substantial effects.

If you're troubleshooting a complaint like "the hearth isn't always drawing excellent" or "the smell comes and goes", venting is continually excessive at the record. Here are symptoms I affiliate with venting being less than right, established on what I've seen inside the true global:

- Intermittent sooting, specifically around the burner discipline or on local surfaces.
- A important scent of combustion items when the fireplace lighting fixtures or shuts down.
- The flame seems volatile or weaker than predicted, with repeated relighting tries.

Even while those signs and symptoms don't seem to be exact evidence, they're sturdy signs to re-examine the flue path, the sealing, the termination scenario, and the room situations on the time of checking out. A contemporary Boiler Repair name may trigger a revisit to the fire if ducting or gasoline pipe runs were altered at some point of same work.

## **Common installing errors and the way they actual happen**

People assume mistakes as glaring. In fact, they customarily ensue for the reason that the deploy appears to are compatible neatly whereas the particulars quietly drift.

A few patterns I've encountered over the years:

1. The flue route is equipped with too many awkward offsets, or it has a bend this is technically "allowed" however not proper to the definite layout. Under original use it might possibly be nice, but lower than distinctive wind or door-open stipulations it will war.
2. The terminal ends up in a place wherein rain and wind styles differ. That can create condensation and reduce draft through the years. It seriously is not all the time on the spot, that is why lawsuits most often come lower back later.
3. A seal is compromised. Sometimes the seal is effective unless the encompass is fitted. The surround pulls, nudges, or helps the flue by accident. The joint seems aligned, but the precise seal integrity is decreased.
4. The flue path is supported incorrectly. A slight sag or wrong guide role can step by step alternate functionality.

What facilitates is sweet workmanship and endurance. You shall be brief and nevertheless be desirable, but you won't be able to be careless and wish for the fantastic. Venting is safety integral, and gasoline paintings is unforgiving.

## **Interactions with different gasoline appliances within the home**

It is easy to treat every one equipment as separate, but in lots of houses, they proportion air paths and strain dynamics. A fuel fireplace sits within the room, even as the boiler, cooker, and any extractors all impression the constructing's airflow.

If the loved ones has more than one gas appliances, that's worthy inquisitive about when they're used in combination. For occasion, operating a cooker extractor at the same time as lights a gas fire can exchange how the room breathes. If a boiler has these days been serviced, the flue might have been disturbed, or drive behaviour could have shifted. In a busy domestic putting, even Plumbing transformations can switch airflow routes, let's say when air bricks or air flow grilles are blocked for decorative reasons.

This could also be in which the authentic means matters. A in a position Gas Fire Service doesn't just analyze the hearth, it seems to be on the process the fire exists inside. It is one purpose purchasers mostly deliver up boiler concerns on the same time, in spite of the fact that the boiler itself shouldn't be the source of the problem.

## **LPG and commissioning after differences, no longer simply before everything install**

I stated LPG already, yet it's worthy repeating in real looking phrases. If you change to LPG, or while you trade any enormous component of the venting formulation, you must always anticipate to test once more. Fuel conversion can modify combustion characteristics. Venting can even be impacted if the flue configuration changes all through preservation.

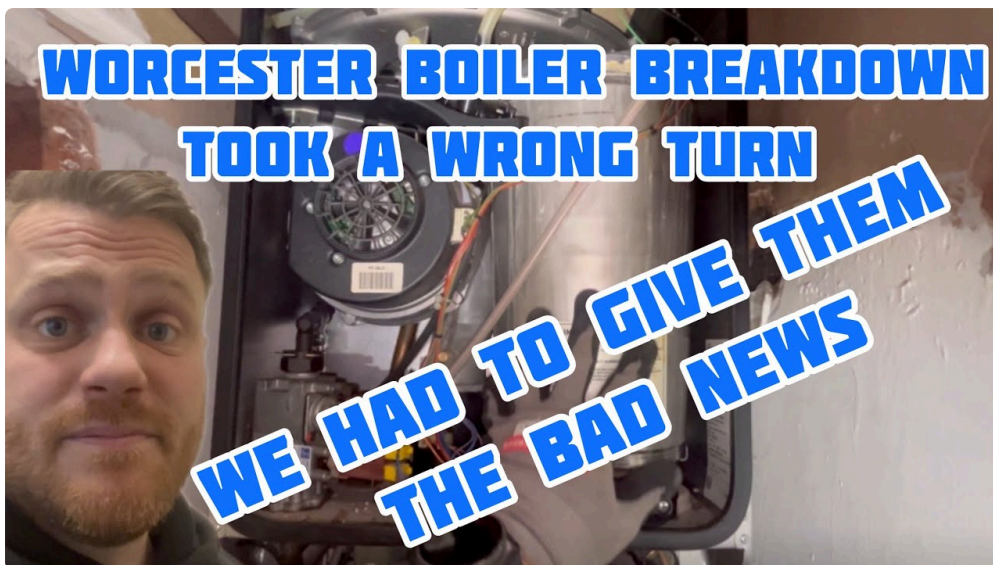
Similarly, in the event you eradicate and re-in shape a hearth for decorative purposes, you possibly can by chance disturb the flue connection. The process may perhaps glance "the related", however the seal might not be identical to beforehand. That is why a good Gas Fire Installation includes verification after work is full, and a Gas Safety Check after any noticeable swap.

## **The client communique: how to provide an explanation for venting importance devoid of scaring them**

One of the toughest components of the activity is explaining to patrons why the outside flue termination place matters, why room force issues, and why I may want to extend decorative finishing unless testing is accomplished.

I probably save it grounded: I tell them that venting is what includes combustion merchandise away. If it is incorrect, the appliance can burn less cleanly or menace products entering the room. I present them the flue path and [Aircon Essex](#) termination, then I provide an explanation for what I fee at some stage in commissioning and why I document it on the certificate.

Most homeowners chill out once they appreciate the technique is methodical, no longer obscure. They like transparent explanations. They additionally like that it protects them and their domestic.



## When a flue path isn't really gorgeous, you need a genuine fix

Sometimes, the honest solution is that an existing flue or chimney direction just isn't desirable for the equipment being established. That can take place with blocked liners, moisture problems, or a direction that has been altered by using old paintings. You could see the flue pipe run in a means that looks serviceable yet does no longer meet requisites for the new equipment.

In the ones instances, "making it suit" is absolutely not the exact function. The precise function is a venting gadget that performs successfully. That might suggest converting the flue configuration, by way of the manufacturer-permitted kit, putting in a the various style of equipment, or upgrading elements of the procedure to be certain that the pathway for combustion merchandise is protected.

This is also wherein experienced judgment is available in. It shall be tempting to push due to because a targeted visitor needs the fireplace working this week. But venting needs to be dependable in all lifelike prerequisites, not simply inside the second.

## Related work that could holiday venting up

Venting doesn't are living in a vacuum, and there are jobs that as a rule appear along gasoline fireplace paintings:

- Boiler set up or Boiler Service game that alters flue constituents or room airflow.
- Plumbing ameliorations the place air flow grilles, pipe runs, or void get entry to impact air action.

- Aircon and Air Conditioning ducting that shifts pressure patterns.
- Larger refurbishment in which developers shut gaps or pass get entry to panels that have been section of the usual ventilation process.

I've visible situations wherein a person desired "a speedy repair" seeing that the fireplace had to be in region for a transfer-in date. The most competitive result came from coordinating trades so the fuel paintings used to be executed, validated, and signed off, formerly ultimate finishes made destiny ameliorations more difficult. That coordination prevents rework, and rework is wherein venting errors get more likely.

## **Practical takeaways when you're planning a brand new installation**

If you're reserving a Gas Fire Installation and you would like the venting to be suitable, your most sensible approach is to invite sensible questions and anticipate thorough tests. You do now not need to emerge as an engineer. You simply want to recognize what brilliant feels like.

A powerfuble installer will communicate approximately the flue path and termination position, will make sure the equipment flue requisites, and may no longer treat commissioning as non-obligatory. They will probably give an explanation for what they determined all over the exams and how they tested protected operation. You should still also anticipate a Gas security certificate in which important, and clean advice if any related alterations are essential by means of room situations or LPG conversions.

A fuel fire will also be a lovely characteristic, however additionally it is a protection device. Venting is the hidden part of the installing, and while that is completed top, you get extra than peace of intellect. You get secure ignition, easy burning, and an appliance that behaves predictably season after season.

If you ever suppose that a fireplace seriously is not acting prefer it used to, otherwise you discover sooting or intermittent smell, treat it as a recommended to ebook a Gas Fire Service other than "ready till it will get worse". Venting troubles more often than not recuperate with the perfect prognosis, and they may change into better trouble while they may be passed over.

And whenever you are also coping with Boiler Breakdown, Boiler Repair, or different gasoline appliance work inside the same home, it's value having the engineer bear in mind the larger picture. Gas appliances percentage a area. When one changes, venting performance can change too.