

Buying a new boiler is one of those judgements that feels wonderfully final these days you sign the documents, then quietly worries you inside the months that persist with. You could imagine the hardest half is done, however most boiler issues do not begin with a dramatic failure. They get started smaller: a barely off flame development, a power that drifts, an ordinary whiff when the burner fires, a condensate seize that slowly will get grumpy. An annual boiler provider is the splendid method I know to continue these small troubles from turning into a full boiler breakdown, and to secure the payment you positioned into your boiler setting up.

I even have observed a long way too many situations in which the consumer proposal, "It's simply a year historic," or, "It still sounds normal." Boilers could be forgiving, rather in good-planned techniques, yet add-ons do now not get kinder just on account that the calendar says they must always. Heat, combustion gases, drive cycles, and time all go away marks.

What annual servicing basically protects

A provider just isn't only a brief appearance and a stamp. A true boiler service offers your engineer a risk to ascertain how the boiler is burning, how it's onerous flue gases, and the way thoroughly it's miles controlling heat and force. That manner fewer surprises at some point of cold snaps, and it additionally reduces the danger of a minor fault becoming one thing that necessities a larger boiler restoration activity.

When you commission a brand new equipment, you should not in simple terms shopping for a heat supply. You also are purchasing a hard and fast of programs running in combination: fuel deliver, burner controls, combustion overall performance, condensate handling, water circulate, enlargement and rigidity leadership, and defense gadgets. Most of these components degrade progressively. They do not necessarily fail neatly, once in a while they just flow out of tolerance. Annual servicing catches that waft even though that is nevertheless reasonable to repair.

If you might be at the LPG side of factors, the similar theory applies. LPG boilers can behave a chunk differently depending on provide first-class, regulator overall performance, and how persistently the gasoline is introduced. Gas fireplace service and gas cooker installing are same memories, just with diversified priorities. Anything that burns gas advantages from commonplace inspection.

The "new boiler" misconception

A new boiler can nonetheless broaden trouble early on, and there are a number of reasons why.

First, even a neatly-hooked up unit may be tormented by machine complications that sit down upstream. A imperative heating machine could have sludge from older pipework, magnetite deposits, or frequent corrosion items left over from years of forget about. If the machine balance become not perfect at installing, or radiators certainly not were given correct vented, the boiler may match tougher than it may still. Over time, that more strain shows up within the approach the boiler cycles and in how sparkling the heat exchanger remains.

Second, manage behaviour can glance high-quality until eventually conditions substitute. A boiler would run flawlessly on a light autumn day, then behave strangely when the climate flips again to iciness chilly. That is when ignition patterns, combustion balance, and condensate drainage become great.

Third, some faults are certainly put on-related even within the first 12 months. Fan or sensor tolerances, seals, condensate supplies, and electric connections are all portions that is also slightly imperfect from the jump. They always do not “holiday” in a dramatic method. They emerge as much less reliable.

Annual servicing is the way you hinder reliability from counting on good fortune.

Signs you desire carrier before the calendar

Even in the event that your service date is months away, you do now not must look forward to the subsequent appointment if you see caution indicators. You may also ebook a fuel security check early if in case you have any doubt approximately nontoxic operation.

Here are examples of things that in the main precede a breakdown or transform pressing whilst temperatures drop:

- repeated boiler resets, principally if they happen more than as soon as in a day or two
- tension losing effortlessly, or the device struggling to reach a constant running selection
- kettling, banging, or peculiar sounds that soar in the course of heating and do not clean
- visible condensation where it may still now not be, or a condensate odor round the boiler section
- a yellow or inconsistent flame sample whilst the engineer opens the case, or any symptoms of terrible combustion performance

Those should not “panic now” signals in every case, however they may be exact factors to name. I may exceptionally any individual e book a visit for a worry that seems to be functional than watch them trip out a fault until eventually it will become a chilly condominium and an steeply-priced restoration.



What your engineer will payment right through a real service

A remarkable boiler service is thorough with out being theatrical. The surest engineers I’ve worked with treat it like a protection and overall performance cost, no longer a container-ticking exercising. While the precise steps vary with the aid of boiler mannequin and fuel classification, the focus has a tendency to live constant:

They will inspect the boiler casing and inner substances, inspect the integrity of fuel and electric connections, and overview protection instruments. Combustion is assessed with appropriate contraptions, notably for gasoline safe practices certificate specifications. Flue operation and ventilation are checked in

view that a boiler can best burn competently if the flue is apparent and the air furnish is excellent. They will ensure that controls and sensors reply as predicted, then examine efficiency below operating circumstances.

If you've a condensing boiler, condensate administration topics. The condensate course, lure, and any drain connections want to be clean. A partially blocked route can purpose repeated lockouts and, in a few circumstances, corrosion disorders over the years. That is one cause servicing is absolutely not as regards to the burner. It can be approximately the plumbing side of the boiler, the small pipework, and how the unit handles the via-items of combustion.

In homes with underfloor heating, lengthy pipe runs, or troublesome machine layouts, the engineer's observations about water circulation will likely be simply as vital. A boiler that works in opposition t deficient circulation can tutor signs and symptoms that glance "boiler-like" but are unquestionably formulation considerations.

A quick pre-visit guidelines you possibly can do at home

If you favor to make the engineer's job more straightforward, these are straightforward steps that quite often pace matters up devoid of being invasive.

1. Check you understand wherein the gasoline isolator and boiler isolation swap are placed
2. Make confident the boiler region has transparent get admission to house for secure working
3. Confirm the cutting-edge readings, resembling system tension behaviour over the previous couple of days
4. Note any symptoms you've gotten spotted, including occasions of day and any mistakes codes
5. If you've got an LPG provide, enable the engineer know while the cylinder or bulk feed used to be last serviced or changed

It is the difference among "we'll inspect it" and "we can zero in rapidly."

Boiler breakdown prevention, now not simply boiler repair

People almost always think boiler servicing is above all about solving trouble previously they turn out to be extreme. That is component to it, however the bigger merit is keeping functionality sturdy so disasters come to be much less most likely within the first region.

A boiler that runs cleanly, burns effectively, and controls temperature safely is less most likely to build up the form of deposits that motive warmth exchanger inefficiency. Poor combustion and not on time ignition can bring about greater inner fouling. In turn, that affects how heat transfers, and on occasion it speeds up component strain.

There can also be the reasonable reality of authentic households. If your boiler breakdown takes place in January, that's seemingly to disrupt every part, from hot water to every single day workouts. Even with emergency callouts, downtime will also be impressive. Annual servicing reduces the odds of that challenge, and when an situation does happen, that's almost always stuck early sufficient to be repaired in a controlled approach.

When machine difficulties desire greater than a service

Sometimes annual servicing displays that the boiler is just not the major difficulty. It shall be a sign that the important heating system wants attention.

For example, sludge and debris can build up and preclude circulation. The boiler then cycles extra, overheats in the neighborhood, or struggles to defend reliable temperature. That is the place a vigour flush may perhaps come into the communique. A chronic flush isn't really a informal upload-on, it truly is a critical intervention. It is additionally not the primary aspect I suggest for each and every equipment limitation, because you need to diagnose sooner than you treat. Still, while you see facts of heavy sludge, chronic movement disorders, or repeated thermostatic themes, a accurate assessment can even justify Power Flush work.

The exchange-off is settlement and disruption. A thorough flush can take time, also can require brief alterations to your procedure, and may also be messy. But if your formula is closely contaminated, ignoring it means your new boiler readily will become the purifier and the shield for a quandary that may want to had been addressed in the past.

When a boiler install involves careful machine design and initial balancing, you occasionally reduce the want for competitive interventions later. When a formulation has inherited years of forget about, the maths variations.

Gas defense investigate, certificate, and why forms matters

A gasoline safeguard certificates is absolutely not just an administrative requirement for landlords or detailed commercial setups. It displays that a certified consumer has assessed trustworthy operation, proven combustion efficiency in which wonderful, and ensured flue and safe practices methods meet the considered necessary necessities.

For home owners, the improvement of constant record maintaining is that which you could see your boiler's background. If one thing changes, you're able to evaluate what became measured closing 12 months in opposition t this yr. Engineers can spot styles, and [Gas Fire Service Essex](#) one can make decisions with more advantageous files other than guessing.

If you may have business premises, like a unit with a fuel cooker or a burger van gasoline setup, the security common sense is the identical. The system may additionally run more difficult, greater ordinarily, and in extra variable conditions. That makes gasoline safeguard assessments and scheduled provider even greater severe. A trade has less tolerance for downtime and less opportunities to "be patient."

Gas fires, gasoline cookers, and why the protection mindset needs to match

A boiler will never be the merely equipment which may impression comfort and security. If you actually have a fuel fireplace, it can pay to agenda a gas hearth service along your boiler. These home equipment percentage related protection worries round combustion and air flow, besides the fact that their controls and heat outputs range.

If you may have a gasoline cooker install or a commercial fuel cooker setup, repairs nonetheless matters. Cooking home equipment ordinarily face grease residues, airflow modifications in the event you open doors or cross laborers, and well-known use which could pressure valves and regulators. Regular tests guide hinder slow deterioration that becomes detrimental or unreliable should you desire the package maximum.

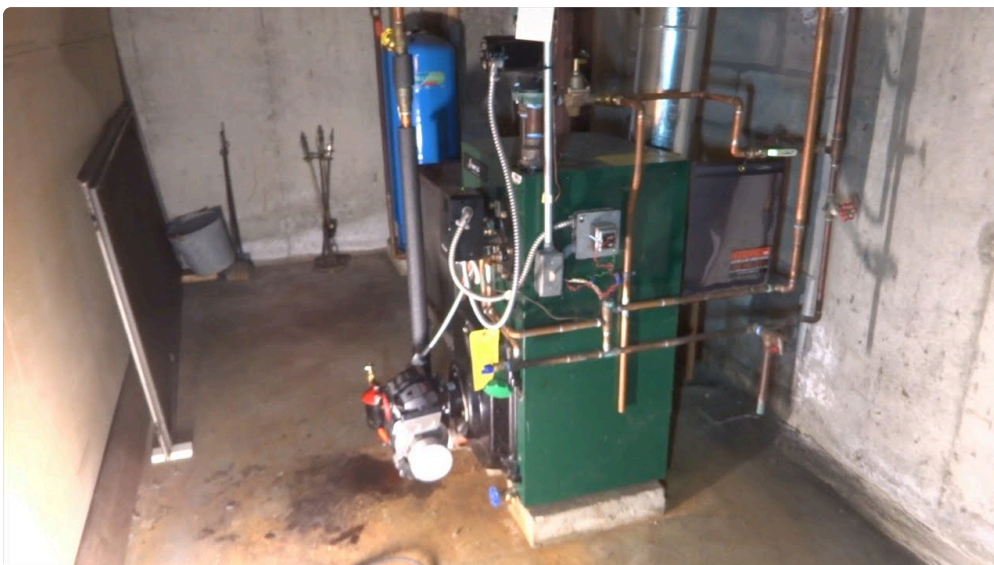
The top manner is consistency. If an engineer already visits for the boiler, asking them to investigate adjacent fuel home equipment may be clever, assuming they're qualified and the scope suits your subject. Just be careful now not to "package the entirety" into one rushed appointment if the work truthfully needs separate attention.

Aircon and the marvel overlap with boiler service

It would sound odd, yet I've had home owners point out equally boiler things and air-con problems all the way through the related visit window. The overlap is regularly life like rather than technical. When americans plan domicile advancements, they characteristically agenda distinctive trades round the same time.

Still, there may be a diffused connection: equally systems rely on airflow, drainage, and true install tips. A blocked condensate drain can motive boiler lockouts, although a poorly mounted air-con condensate line can leak and create damp patches. Those damp patches can have effects on surrounding plaster and intent mold. So even if the decision is exceptionally for boiler provider, I in many instances see similar concerns in the similar actual neighborhood.

If you might have aircon models near the boiler cupboard, loft service routes, or shared drainage runs, it would be worth stating during the appointment. It supports save you the "we fixed one aspect, but the damp remains there" position.



How often may still you provider, and what does "annual" rather mean?

Most employees suppose "once a year" means the calendar date. In prepare, it commonly makes greater sense to service formerly the heating season gets brutal. Many engineers like the lead-up duration, when components are less complicated to supply and the problem landscape is quieter.

In total, annual carrier is a reliable baseline. If you run the boiler greater intensively, have a larger assets, or have an older method with customary trouble, you may also come to a decision on further exams. If your boiler experiences prevalent lockouts or you've got you have got components quirks, it's possible you'll need extra visits beyond the standard annual agenda.

The optimal time table is the one that reflects genuine usage, no longer a popular assumption.

What takes place should you pass servicing?

Skipping service is tempting whilst your boiler is quiet. The aspect about quiet appliances is they can still be working external most beneficial safety or efficiency tolerances with no sounding alarm bells.

When you skip servicing, a number of disadvantages stack up. You are more likely to miss early combustion overall performance glide. You would possibly not discover condensate blockages beforehand they cause recurring faults. And you lose the measurements that guide you see developments through the years.

The settlement of a boiler breakdown will not be just the restoration bill. It may be the disruption. Emergency callouts is also extra costly, and you might be depending on availability. If you have got tenants, that disruption becomes somebody else's worry. If you run a industrial with gasoline cooker set up or a burger van fuel setup, downtime can have an effect on sales abruptly.

I've observed employees justify skipping service through saying, "It's jogging pleasant." That line could be excellent proper up until it isn't.

Choosing a provider dealer without guesswork

Not all boiler provider studies feel the same. Some appointments are fast due to the fact that the engineer is helpful and ready, others experience rushed as a result of the scope is uncertain. You would like readability.

When you ebook, it enables to invite what the provider incorporates and whether it covers checks valuable to your boiler category and gas, reminiscent of LPG platforms. Also ask about reporting. A perfect engineer explains what they stumbled on, what they suggest, and what they remember generic as opposed to relating to.

You do no longer want a dramatic lecture. You do desire self belief that the engineer is doing the accurate measurements, taking safeguard seriously, and being straightforward about menace.

One real looking frame of mind is to request a carrier summary after the visit. That can also be as undemanding as a rfile of assessments and readings. If your boiler requires a gas safety certificates for the obstacle, verify the documentation is provided.

What I look for when recommending a service

If I needed to describe it in human phrases, I'd say you want a dealer who:

1. Treats fuel defense as non-negotiable, not optionally available
2. Diagnoses first, replaces parts simply when justified
3. Checks flue, combustion, and controls with relevant gadgets
4. Gives you transparent subsequent steps if anything seems to be borderline
5. Explains device-comparable themes, no longer simply boiler components

That final level concerns greater than people expect. Boilers are routinely blamed for difficulties that belong to plumbing, pipework, or water balance.

Small conduct that make stronger a wholesome boiler

A boiler provider can purely do so lots. Your day by day alternatives additionally have an effect on how cleanly the system runs.

Bleeding radiators while needed is helping circulation and reduces air locks. Keeping the boiler drive in the instructed variety reduces rigidity. If you ever discover yourself topping up water ordinarily, that may be a

signal of leaks or formulation points, now not a "established" habitual. Persistent topping up is really worth investigating, seeing that it is going to introduce sparkling minerals that give a contribution to scale.

If you have laborious water, the boiler would possibly style scale in another way across heating cycles. That is a explanation why why traits in performance and measurements topic. Over time, you'll research what your device tolerates and what reasons problems.

For residences with aircon, be responsive to humidity and condensation around carrier routes. Damp spaces can cover drainage complications or create circumstances that have an affect on nearby pipework. It isn't very approximately obsessing, that's approximately noticing what variations.

A simple illustration: the boiler that "kept operating" until eventually it didn't

A patron once instructed me their boiler was "first-class" since it under no circumstances stopped. Then, for the duration of the yearly boiler carrier, we stumbled on that the combustion quality become drifting and the condensate route was once partly blocked. Nothing had triggered a dramatic fault code at home, but the boiler were working towards a small downside for lengthy enough that performance and reliability have been already affected.

They had seen gentle odours close the cupboard after burner starts off, but they assumed it changed into time-honored. With the correct tests, we would tie warning signs to probably causes rather than guessing. Cleaning and adjusting the condensate route, plus correcting combustion settings, restored smoother operation.

That is what servicing does at its first-class. It turns a imprecise feeling right into a measured situation with an actionable restoration.

Protecting your investment after boiler installation

A new boiler is supposed to closing, but this will best convey that lifespan if the system is supported. Boiler deploy seriously is not the finish line, it is the birth of a operating relationship with the appliance.

If you had an installer who balanced radiators, flushed the equipment appropriate while crucial, and ensured accurate flue and air flow, that groundwork enables. If the formulation nevertheless has infection subject matters, annual carrier will become even greater treasured, and a strength flush might be thought about if facts helps it.

Think of it like tyres on a brand new auto. You can drive it with out checking them weekly, but you are betting opposed to slow leaks and choppy put on. The cash saved by using skipping assessments customarily disappears the instant you will want change something suddenly.

What to do after the provider visit

After annual boiler service, your activity is to pay attention to how the boiler behaves. If the engineer tuned the burner and checked safety controls, the boiler should run greater continuously. If you had been urged on a plumbing hindrance, watch for benefit after any observe-up works. If you were advised a fault is developing, ask for a realistic timeframe and the indicators to seek for.

If you're in a condominium or business context requiring gas safeguard certificate documentation, prevent the paperwork someplace you can in finding it right away. It isn't glamorous, but it prevents frantic searches

later.



If you are working other appliances, like gas cooker deploy tools, or you've fuel fires, it's an exceptional moment to review your preservation agenda. Consistency reduces surprises, and surprises are what money humans time and money.

The backside line on annual servicing

Annual boiler provider is not very approximately concern, it's miles approximately stewardship. It protects safeguard, continues combustion efficiency beneath keep watch over, and decreases the opportunity of boiler breakdown should you need hot water and heating most.

A new boiler deserves great care, and well care is not really hard. It is widely used cognizance from certified engineers, truthful reporting, and stick with-using when the formulation demands more than a music-up. When you treat servicing like section of possession in place of an occasional chore, your boiler funding is far much more likely to practice the means you expected when it turned into first established.