

A gas cooker install is one of those jobs laborers count on is "simply connecting a pipe and switching it on". The reality is more exacting. Get a detail flawed and you won't realize the rest promptly, but the risks add up fast: leaks, negative combustion, nuisance shut offs, destroy to pipework, or worse. The satisfactory installations feel dull in the method that brilliant plumbing and sturdy engineering continually do. Everything suits smartly, the controls behave adequately, the flue is good, and the device is checked and signed off.

Over the years I've handled the entirety from recurring appliance swaps to "we desire this taken care of in the past service this night" callouts. A ordinary subject matter is that the installer's job shouldn't be completed while the cooker clicks into position. The genuine work starts with testing, adjusting, and proving protected operation, whether or not you're fitting a usual domestic cooker or helping a busy putting like a burger van fuel setup.

This aid walks by means of how a safe, maintain, and nicely established Gas Cooker Installation may want to be approached, what to look out for, and how it relates to the relax of your gasoline technique, which includes Boiler Breakdown disadvantages, Boiler Service behavior, and even Gas Fire Installation and Gas Fire Service exercises. I'll additionally touch on LPG, original pipework questions, and why a Gas Safety Check and Gas security certificates topic even when every thing "looks wonderful".

The distinction between "put in" and "reliable"

People recurrently inform me, "We've invariably used gas cookers like this, it's straightforward." I don't doubt their heritage, however background is simply not a try out.



Gas cookers involve fuel offer connections, burner settings, air flow assumptions, and steadily electric connections in the event that your edition has ignition electronics or a timer. If you have a combi boiler, you also prefer to reflect on the broader process. While fitting a cooker just isn't the equal task as Boiler Installation, the plumbing and gas accessories are nonetheless portion of one surroundings. When boilers are left out, Boiler Repair will become an even bigger subject. When gasoline home equipment are swapped without properly tests, Gas Safety Check turns into a office work obstacle and a safeguard worry.

A trustworthy installing is the one where:

- each and every connection is verified leak-free
- combustion is validated to be operating correctly

- the cooker operates as intended across established use
- any required documentation is issued

If any of these steps get skipped, it is able to still “paintings”, but it received’t be effectively proven.

First questions until now you contact a spanner

Before I plan pipework or stream the cooker into position, I ask lifelike questions. Some are approximately the cooker itself, others approximately the setting it sits in.

For a residence kitchen, the huge ones are: what variation is being equipped, what gas classification is used (organic gasoline or LPG), and what present pipework and isolation valves are already there. Even if a kitchen seems to be tidy, it may hide previous flex hoses, dated valves, or connections which have been reworked by means of earlier contractors.

In advertisement environments, the questions get sharper. A burger van gasoline setup many times potential distinctive cylinders or a planned distribution association, quicker turnaround, and more conventional inspections from whoever’s going for walks the website. If you’re serving nutrients, you want greater than “it lighting fixtures”. You want repeatable safe practices.

If the appliance makes use of LPG, you’re managing special working assumptions than customary common gas installations. Jet sizes, regulator behaviour, and burner overall performance rely upon definitely the right configuration. That potential the installer demands to make sure the cooker’s suitability and comply with the manufacturer instructions for LPG operation. A unsuitable setup will never be constantly dramatic, but it will instruct up as sooting, inconsistent ignition, or lingering smells.

There’s also the home techniques attitude. Many kitchens are paired with an latest boiler and plumbing that could have been challenge to years of damage, perchance minor maintenance, maybe a Power Flush sooner or later. A Power Flush is continuously discussed in boiler contexts, but it’s nonetheless relevant to the whole technique health and wellbeing. If the boiler is struggling, let's say, it is easy to find yourself with fluctuating overall performance that folks mistakenly blame on the cooker. Sometimes they’re connected, many times they’re now not, but either means, the installer should always sidestep guesswork.

Finally, ventilation and structure count. If you’re also coping with Aircon or Air Conditioning in the identical sector, airflow styles can influence how nicely fumes disperse and the way the kitchen behaves when home equipment run jointly. It’s no longer that an air conditioner “reasons” a gas fault, yet poor air flow and bad equipment placement make everything harder to be certain.

Planning the route and the connection

Most set up considerations I see come from making plans shortcuts. People go the cooker into location, then appreciate the hose is stretched, the valve is inaccessible, or the pipe path creates stress on the connection. Gas connections could not at all be left under strain.

A suitable path planning step in most cases entails:

- checking clearances behind the cooker and at the sides so that you can pull it forward if needed
- making sure the isolation valve is still accessible with no dismantling half of the kitchen
- verifying an appropriate class and length of connection materials are used
- confirming the cooker is degree and stable

If you're replacing an ancient cooker, it's customary to locate mismatched fittings. Sometimes any individual geared up an adaptor in some unspecified time in the future that worked "nicely satisfactory". The danger is that adaptors can replace how the relationship sits, impression sealing surfaces, or complicate destiny service.

Plumbing paintings around a cooker is frequently user-friendly in precept, yet it wishes to be handled as a precision assignment. A somewhat misaligned pipe can end in micro leaks that simplest reveal up under specified circumstances, like strain differences whilst the burner starts off.

Leaks usually are not a "scent try out"

The so much severe mistakes I've noticed contain skipping formal leak detection. Relying on smell is unreliable and unsafe. Gas has distinctive odour qualities, the kitchen may well produce other smells masking it, and odour is also subtle at low degrees.

A best suited Gas Safety Check includes checking for leaks by means of most appropriate leak detection strategies. In perform, that means the installer assessments all crucial joints and connections after meeting, prior to the appliance is placed into full service.

A leak test is absolutely not only a one-time movement. The first-rate method exams, then moves the equipment relatively if it become fitted tight, then re-assessments. Flex hoses and connectors can behave in a different way when the cooker is in last position when compared with the "almost there" degree.

If you're pondering, "It's basically a cooker connection, now not a full components," count number that a cooker connection is still a gasoline line. It deserves the related area you possibly can count on from a professional Boiler Service or Boiler Repair job.

Ignition, burner overall performance, and what to seem to be for

Once the gasoline is safely related, the set up isn't performed till the ignition and burner functionality are validated. Even if the cooker lights quickly, there would be concerns with gas charge or burner adjustment, notably after conversion among fuels or while fitting a alternative model.

What "sensible" appears like is steady ignition, stable flame patterns, just right operation of the hob and oven burners, and no wonderful noise or behind schedule ignition. What "no longer remarkable" looks as if carries:

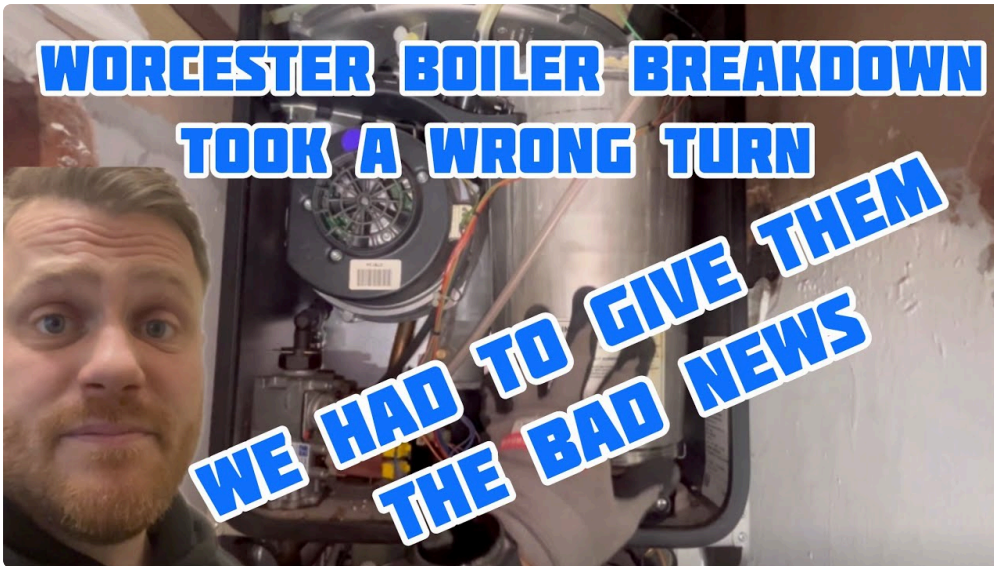
- not on time lights or repeated clicking earlier ignition
- flames that elevate excessively or take place unstable
- sooting round burners or throughout the oven if the cooker is newly installed
- persistent smells all the way through operation

If one thing seems to be off, it's a troubleshooting moment, now not a "go away it and desire" moment. Gas home equipment may have adjustable settings relying on the version, yet any modifications ought to be done consistent with manufacturer training and with trying out. If LPG is fascinated, settings could range, and the installer deserve to determine the proper configuration.

This is wherein ride concerns. A powerfuble installer is aware of when a obstacle is most likely adjustment and whilst it's in all likelihood a furnish drawback, a misfit thing, or an incorrect conversion setup. The so much time-drinking callouts primarily beginning with a task that "worked" however was once in no way thoroughly verified and tuned.

Oven use is a truly-global scan, not a formality

A outstanding quantity of installations fail the authentic-world cost simply because the installer focuses on the hob in basic terms. The oven adds distinctive burner behaviour, heat management, and typically completely different ignition timing.



During a excellent commissioning phase, you need to peer:



- oven ignition functioning reliably
- temperature control behaving as anticipated across a range
- the cooker's defense controls responding normally

If you've ever tried to bake, you know the way unforgiving temperature themes will probably be. The comparable suggestion applies to gas home equipment. The cooker may want to perform adore it's meant to, no longer just gentle up.

Isolation valves and the provider future

One of my established compliments is when somebody says, "It turned into trouble-free to provider, all the things is out there." The top installations imagine in advance. A cooker may well want cleaning, burner

servicing, or eventual substitute. A amazing installer positions the arrangement so that long term paintings is viable with out wreck.

That includes making certain the isolation valve might be reached and operated properly. It additionally incorporates checking the fit in order that moving the cooker for cleaning does now not tension the gas connection.

This is in which individuals normally get stuck. They wish the cooker moved near to a wall, or they wish a cupboard constructed round it for aesthetics. Sometimes that's fine, regularly it's a mistake. I've obvious kitchens where any person squeezed a cooker into a area that avoided trustworthy entry, then later a Gas Fire Service or Boiler Repair call have become greater tricky when you consider that all the things in the edge had to be disturbed.

Keep in brain too that if in case you have a boiler and also you're planning Boiler Service schedules, the installer may perhaps need to coordinate get entry to across the room. I've additionally noticeable layouts wherein Air Conditioning models or ducts reduce service access, no longer by reason of the fuel pipe itself, however since the structure makes it tougher to convey instruments in. Planning avoids the scramble.

Where the boiler and cooker attach in genuine life

A gasoline cooker installation will never be a boiler install, yet they stay in combination in the similar house strategies. If you've had Boiler Breakdown inside the beyond, or you're due Boiler Service, you already fully grasp that fuel reliability is absolutely not about good fortune.

Here's what I await while a cooker is established along an current boiler and plumbing arrangement:

- Are there any indicators of routine boiler matters that probably careworn with kitchen symptoms?
- Are pipework helps comfortable, and are there vibration or action issues?
- Is the boiler compartment air flow because it ought to be, because the kitchen and boiler environment can work together in drive and airflow?
- Has the technique ever crucial Power Flush, suggesting contamination disadvantages in radiators or glide?

Power Flush isn't a generic requirement simply considering the fact that you're fitting a cooker, yet if a relatives has had it achieved owing to blockage or sludge matters, the manner probable has a normal heritage. An installer ought to ask questions in preference to assume.

Similarly, if your property additionally comprises a fuel hearth, Gas Fire Service or Gas Fire Installation things in the standard photograph. Flue functionality and air flow assumptions are equipment-degree issues. If one fuel equipment is running poorly, it's not necessarily since that appliance is inaccurate, in some cases the room setting or flue steadiness is at fault.

A well installer treats the whole gasoline surroundings as worthy checking, even when the task is "simply the cooker".

LPG and burner conversions: the half americans underestimate

LPG installations are well-liked in residences without mains gas, and so they train up in seasonal we could too. They also arise in business setups where cylinder gasoline is used. LPG should be would becould very well be risk-free and perfectly potential, yet it transformations the configuration standards.

If you're setting up a cooker for LPG, the installer will have to:

- ascertain the cooker is LPG well suited or true converted to LPG by way of an appropriate method
- be sure the regulator and furnish arrangement are incredible for the cooker's requirements
- commission the equipment so burner functionality is well suited on LPG

Where persons cross flawed is assuming that simply because a cooker lighting fixtures on LPG, it will have to be appropriate. LPG can tolerate some mismatch and nevertheless ignite, yet combustion quality can undergo. That's why commissioning and remark count. Flame visual appeal, ignition behaviour, and the absence of irregular smells or sooting are not non-compulsory.

In burger van gasoline settings, LPG should be would becould very well be installed for prime demand and quick carrier. That way vibration, standard flow of kit, and quite often cylinders or staged supply structures. The setting up discipline wishes to be even tighter given that small concerns transform widespread matters faster whilst the tools runs complicated all day.

Electrical connections: don't let them turn out to be an afterthought

Many revolutionary gas cookers have digital ignition controls, display panels, timers, or defense services. That ability power is component of the full installation package. The electric area isn't always some thing I advocate treating casually.

A risk-free cooker deploy could keep in mind:

- the strength delivery necessities of the model
- suited cable routing and protection
- protected get right of entry to to switches and plugs, or a compliant hardwired arrangement if that's how the form is specified

If your kitchen has more recent sockets, RCD policy cover, and sparkling cable paths, you're in a respectable vicinity. If it's older wiring and the cooker's lead needs to be extended or routed awkwardly, it's bigger to handle these themes now than later. I've considered "brief" cable runs that turn into permanent and then get blamed on the cooker when faults occur.

Testing is the instant you show your work

By the time I'm all [LPG Essex](#) set to hand over, I need the installation to be demonstrably nontoxic. That's in which a Gas Safety Check is primary.

A suitable Gas Safety Check could be sure trustworthy operation, suitable burner behaviour, and leak free connections. It also most commonly feeds into the office work aspect. A Gas safeguard certificate have to be offered the place required by way of the suited preparations and nearby expectancies. In the UK context, that is ordinarily related to gas work and commissioning of gas appliances, and it things for equally safety and compliance. Even whilst a cooker installing is component of a broader undertaking, the certificates and verify particulars should still be recorded truly.

I avert all for what clientele favor in the ones moments. Most other folks don't would like a lecture, they choose trust. If you can actually present that the appliance has been checked and proven, confidence follows.

Small print that things: circulate, upkeep, and "what if"

A cooker seriously is not a stationary item always. It will get pulled out for cleaning, driven lower back for deep cleans, and from time to time replaced. That potential an deploy deserve to be sturdy to natural utilization and destiny protection.

When I install a cooker, I tell folk two matters: 1) do no longer tug on the hose or connection when relocating the cooker 2) if the cooker ever smells distinctive or behaves unusually, treat it as a fault, not as "general gas quirks"

I've additionally observed the opposite hardship. Someone ignores a scent for per week, then the cooker starts offevolved failing ignition. By that element, the restore might be extra fascinated than it needed to be, due to the fact that the preliminary challenge might have been caught until now with instant recognition.

If you furthermore may have Air Conditioning or Aircon going for walks inside the kitchen, prevent in thoughts that prime humidity and condensation can have an impact on how the kitchen smells or how the oven seems after frequent use. That doesn't excuse gas faults, but it may possibly change how straight away a person notices that something is truely fallacious. Test discipline makes it more easy for anybody.

A functional commissioning walkthrough

Here's what a stable Gas Cooker Installation in many instances contains in perform. This is simply not a "do it your self" recipe, it's a picture of the way a competent official processes commissioning. Your good steps depend on the cooker edition and regardless of whether you're on natural and organic gasoline or LPG.

- Confirm the correct gasoline and equipment classes for your installation
- Position the cooker appropriately with well suited clearances and stability
- Fit connections without pressure, then scan for leaks after final positioning
- Commission the equipment, checking ignition and burner operation across conventional controls
- Provide clean handover notes, along with any Gas Safety Check tips and the Gas protection certificate the place required

That 5-element outline is the type of paintings that makes later Boiler Service calls or Gas Fire Service visits more straightforward, not more durable, simply because the setting up records is easy.

When troubles display up after installation

Even with an honest installer, the factual world can introduce topics. That's why exceptional handover contains expectancies and practical subsequent steps if something is off.

Common "after install" situations contain:

- the cooker is moved or wiped clean and the connection is disturbed
- cleansing products depart residue that affects oven behaviour or smells
- cookware placement or burner caps are placed again incorrectly
- somebody attempts to convert the cooker later without relevant conversion kits or commissioning
- the gasoline furnish power regulator or cylinder setup is inconsistent for LPG

Most of these are preventable with careful coping with and short fault reporting. If individual calls you and says, "It started clicking after we cleaned beneath the oven," I abruptly give some thought to burner caps

and seating, but I also favor to rule out gas leaks formerly touching whatever else. The priority order remains the same anytime.

What about DIY and “my mate can do it”?

Gas work has penalties. I’m now not going to dress that up. A cooker deploy is one thing, yet it’s nonetheless fuel. The safe route is to exploit the appropriate qualified person for the install and checking out, specially in which commissioning and certification are required.

The temptation for DIY usually comes from how fast some home equipment appear to more healthy. But pace seriously is not facts of security. Real proof is trying out, size, and documentation. Boiler Installation, Boiler Repair, Gas Fire Installation, and Gas Fire Service all proportion the equal concept: for those who won't test, you shouldn't log off.

A professional activity additionally tends to come with duty. When one thing goes mistaken, you’re no longer stuck guessing what turned into assembled flawed, or even if an historic facet turned into reused. That things on your price range and your peace of intellect.

Quick security tests you can still do as a user

You do have a position after installing. You’re now not supposed to take matters aside, yet that you may notice trouble early and document them precise.

Here’s a quick, lifelike consumer cost routine:

- make certain you realize where the isolation valve is situated and the way to entry it
- watch ignition behaviour the primary few times the cooker is used
- money for extraordinary smells all over lights or whereas switching between settings
- preserve burner caps and trivets competently seated after cleaning
- if anything else feels off, prevent employing and manage a Gas Safety Check promptly

If you do these matters, you catch issues early, that's kinder in your pockets and safer for your private home.

Bringing all of it together

A high-quality Gas Cooker Installation is a blend of cautious mechanical match, disciplined leak testing, and right commissioning so the equipment plays cleanly on equally hob and oven. It’s also an act of admire for the relax of your gasoline setup. If your home has had Boiler Breakdown worries, has ongoing Boiler Service schedules, or includes other fuel home equipment like a gas fire, the installer’s understanding and trying out habits ought to mirror that higher photograph.

Whether you’re fitting a cooker in a regular kitchen or managing burger van fuel demands, the requirements don’t trade. You prove safety. You end up efficiency. You rfile what you did. And you make it handy for a better individual, regardless of whether that subsequent character is you during cleansing, a future Boiler Repair engineer, or person carrying out Gas Fire Service.

If you need a unmarried takeaway, it’s this: the task will never be executed while the cooker is in situation. It’s achieved when it really is dependable, examined, and in a position for real cooking. That’s the distinction among a hookup and an setting up you can still believe.

If you'd like, inform me no matter if you're installing usual gasoline or LPG, and whether it's a family cooker or a industrial setup. I can tailor the foremost assessments on your hindrance and spotlight the such a lot trouble-free pitfalls for that different configuration.